

iPassConnect™ 3.25 for Windows® Release Notes

Version: 1.0, June 2004

This document contains the most recent information on iPassConnect 3.25 for Windows, including:

- New features and enhancements
- Resolved issues
- Known issues
- System requirements
- Supported languages
- Third-party interoperability

New Features and Enhancements

New features and enhancements in this version of iPassConnect for Windows include:

- **802.11abg Support:** iPassConnect will now support 802.11 a/b/g combo cards and access points.
- **IP Release/Renew:** enabled by default, this feature helps ensure that upon connecting to a broadband provider, the user is issued a new IP address.
- **Wi-Fi Driver Improvements:** improvements to wireless card drivers will enhance the reliability of Wi-Fi connections.

Resolved Issues

The following are the most significant issues resolved in iPassConnect 3.25:

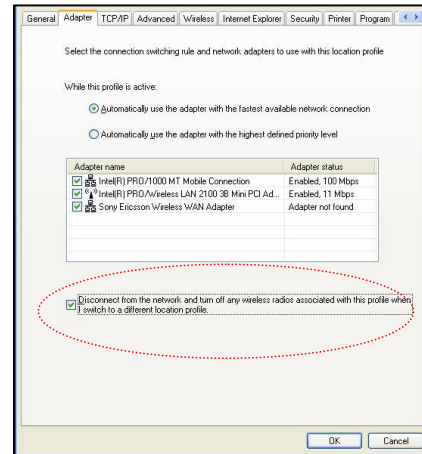
- **Ability to Cancel Connection Attempt:** You can now safely cancel out of a connection attempt while iPassConnect is initializing. In previous versions, attempting to cancel a connection attempt while connecting could cause a program error.
- **SSIDs Displayed Correctly:** If the Wi-Fi card fails to associate with a local network, the failure message now displays the name of the network correctly, in case-sensitive lettering.
- **WEP Parameters Accepted:** After dissociating from a non-WEP network, wireless cards will now correctly accept WEP parameters.

Known Issues

The following issues are known for iPassConnect 3.25 for Windows.

- **802.1x and WEP:** An 802.1x access point must be set to Open or Optional mode for WEP. If set to Mandatory mode, iPC will not connect.
- **IBM Access Connection:** IBM laptops using Access Connection may have a security feature enabled which will shut down the system's wireless card radio after disconnecting from iPassConnect. The Access Connection dialog box to enable or disable this feature is illustrated on page 2. If this feature is enabled, in order to reconnect, the user must manually turn the radio back on using Access Connection, or press Function+F5.

- **Wireless Zero Configuration Utility:**
iPassConnect does not shut down the Windows Wireless Zero Configuration (WZC) utility when the system is running in Power User or Restricted User mode. WZC therefore can sometimes interfere with wireless connectivity in these modes.
- **NCP VPN:** In order to connect using the NCP VPN client, a database administrator must add these values to the `config.ini` file, in the [VPN] section:
ConnectAction=/connect
DisconnectAction=/disconnect



System Requirements

The system requirements for running iPassConnect 3.25 are as follows:

Minimum Hardware Requirements

- Pentium III processor
- 256 MB RAM
- 100 MB free disk space
- TCP/IP Protocol
- 16-bit color mode
- At least one connectivity device installed, depending on your intended connection type:
 - A GSM modem for GSM connections
 - A ISDN terminal adapter for an ISDN connection
 - A 56K v90/92 modem for a dial-up connection
 - A PHS phone for PHS connections
 - An 802.11b wireless adapter for a wireless broadband connection
 - An Ethernet adapter for a wired broadband connection

Operating System Support

iPassConnect 3.25 is supported on the following Microsoft Windows operating systems:

- Windows 2000 SP 4 or later
- Windows XP Home or Professional SP 1 or later
- Windows ME
- Windows 98 SE

Additional Windows Components

The following additional Windows components are required:

- Microsoft Internet Explorer 6.0 SP 1 or later.
- The Jet database engine. However, this is an integral component of the supported operating systems listed above, and no further installation will be needed. If the Jet engine or its registry settings ever become lost or corrupted, you can install the latest version from this URL:
<http://msdn.microsoft.com/data/downloads/updates/default.aspx#jet>
- 802.1x support requires all critical Windows updates, and preferably all recommended updates, for Windows 2000 and Windows XP.
 - Some users of Windows 2000 SP 4 may experience connection difficulties when attempting to connect to a POP that requires a script. Microsoft is aware of this Windows issue and has issued a hotfix, which is described at <http://support.microsoft.com/default.aspx?scid=kb;en-us;824301>.
(Note: this is not a link to the actual hotfix file, but instead contains instructions on how to obtain the correct file from Microsoft.)

Wireless Cards

The following wireless cards have been tested for compatibility with iPassConnect:

- 3Com 802.11 a/b/g 3CRPAG175 Wireless LAN PC Adapter
 - Firmware: 1.0.0.25
- Cisco Aironet 350 Wireless Adapter (802.11b)
 - Firmware: V4.25.30
 - NDIS: V7.29
- Cisco Aironet 340 Wireless Adapter (802.11b)
 - NDIS: V6.64
- Cisco Aironet 802.11 a/b/g Wireless Adapter
 - NDIS: 1.0.0.305
 - **Note:** No auto-detection
- D-Link Air DWL-650
 - Firmware: 2.0.10.0
- IBM 802.11 a/b/g Wireless CardBus Adapter
 - Firmware: 2.4.1.21
- Intel Centrino Mini-PC Card
- Intel Pro/Wireless 2011 (802.11b)
 - NDIS: V4 or V5
- Intel Pro/Wireless 2011B (802.11b) (New Intel Proset)
- Intel Pro/Wireless 5000 LAN Cardbus Adapter (802.11b)
 - Firmware: V1.0.1.10
- Linksys Wireless USB adapter (802.11b)
 - Firmware: V2.5
- Linksys Dual-Band Wireless A+G Notebook Adapter
 - Firmware: 2.4.2.33
- Lucent Orinoco 802.11b PC Card Gold World Card PC24E-H-FC
 - Firmware: 7.14.01
- Microsoft USB 802.11b Adapter (for Desktop PCs)
 - Firmware: V1.31.9.0
 - NDIS: 4.10.2222
- Microsoft Wireless Notebook Adapter MN-720
 - NDIS: 3.20.26.0
- Microsoft Wireless USB 2.0 Adapter MN-710
 - NDIS: 1.0.8.0
- Nokia C110/C111 Wireless Adapter
 - Firmware: V0.0.104.0
- Orinoco 802.11ag ComboCard Gold
 - NDIS: 2.3.0.75
- Orinoco 802.11ag ComboCard Silver
 - NDIS: 2.3.0.75
- Toshiba Wireless LAN Mini PCI Card

Supported Languages

iPassConnect 3.25 is supported in the following languages:

- Brazilian Portuguese
- English
- French
- German
- Japanese
- Korean
- Simplified Chinese
- Spanish
- Traditional Chinese

Third Party Integration

iPassConnect 3.25 can be integrated with the following third-party products. iPassConnect will support the listed version number and later versions.

VPN

- Aventail VPN version 5.1.2
- Checkpoint NG FP3
- Cisco System VPN Client version 3.6.3
- NCP VPN 8.0
- Nortel 4.65.18
- PPTP (as shipped with the OS)

Anti-Virus

- Network Associates McAfee Virus Scan Enterprise version 7.0
- Symantec Norton AV Corporate Edition version 8.0

Personal Firewall

- ISS RealSecure (Black Ice) version 3.1eah
- Sygate PFW Pro v5.0
- ZoneAlarm Pro – Integrity Desktop (ZAP1D) 3.7.172

About iPass

iPass Inc. delivers enterprises simple, secure and manageable connectivity services for mobile workers as they move between office, home, and remote locations. iPass combines its global network of dial-up, Ethernet and the world's largest Wi-Fi footprint with support for campus wireless LANs and home broadband connections to deliver a unified and comprehensive solution. The award-winning iPassConnect™ user interface, centralized management, leading security features and powerful policy enforcement have made iPass services the choice of hundreds of Global 2000 corporations including General Motors, Dow Corning and Underwriters Laboratories. Founded in 1996, iPass is headquartered in Redwood Shores, California, with offices throughout North America, Europe and Asia Pacific

Corporate Headquarters
iPass Inc.
3800 Bridge Parkway
Redwood Shores, CA 94065
United States
Tel: +1 650.232.4100
Fax: +1 650.232.4111
www.ipass.com

Australia
iPass Holdings Pty Ltd.
Level 1, 80 Waterloo Road
Macquarie Park, NSW 2113
Australia
Tel: +612 8876.8700
Fax: +612 8876 8777

United Kingdom
iPass (U.K.) Limited
139 Piccadilly
London W1J 7NU
United Kingdom
Tel: +44 20.7317.4400
Fax: +44 20.7317.4450

Hong Kong
iPass Asia Pte Ltd.
3802A, Lippo Centre
Tower Two
89 Queensway, Admiralty
Hong Kong
Tel: +852.2918.8268
Fax: +852.2918.8278

Germany
iPass EMEA
Region D/A/CH
Wiener Platz 7
D-81667 München
Germany
Tel: +49 89 44 142 - 100
Fax: +49 89 44 142 - 111
infoDach@ipass.com

Netherlands
iPass EMEA
Kingsfordweg 151
1043 GR Amsterdam
Netherlands
Tel: +31 20 491 77 48
Fax: +31 20 491 9090
sales-emea@ipass.com

Sweden
iPass EMEA
Frösundaviks Allé 15
Solna
Stockholm 16970
Sweden
Tel: + 46 (8) 590 041 39
Fax: + 46 (8) 590 041 10
sales-emea@ipass.com

Belgium
Pegasus Park
Pegauslaan 5
1831 Diegem
Belgium
Tel: +32 2 709 29 40
Fax: +32 2 709 22 22
sales-emea@ipass.com

Denmark
South Harbour
Sluseholmen 2-4
Copenhagen South 2450
Denmark
Tel: +45 36 94 45 65
Fax: +45 36 94 45 10
sales-emea@ipass.com

Japan
iPass Japan
Ginko Kyokai Building, 15th Floor
1-3-1 Marunouchi
Chiyoda-ku, Tokyo 100-0005
Japan
Tel: +81 3.3216.7266
Fax: +81 3.3216.7281
Singapore
iPass Asia Pte Ltd.
7 Temasek Boulevard
#23-02 Suntec Tower One
Singapore 038987
Tel: +65 6334.8783
Fax: +65 6337.033

Latin America
Tel: +1 650.232.4186
Fax: +1 650.232.0229
sales-sa@ipass.com